

SPJ-BV Series

The SPJ-BV Series* Heavy Duty, reverse-pulse baghouse (BIN VENT) dust collector, has no moving parts and ships completely assembled for a quick installation. High efficiency and a *patented cleaning technology* provide long bag life and low maintenance cost.

SPJ-BV Series Baghouse



Low Profile BinVent



STANDARD FEATURES

- Patented Cleaning Nozzle Technology.
- Bird screen and rain hood provided when no fan is needed.
- Bottom safety grating and lifting lugs.
- 12 gauge hot rolled steel housing, reinforced to withstand \pm 20 IWC.
- Compressed air required: 90-100 psi. Must be clean and dry.
- Designed for Indoor/Outdoor use.
- Solid state timer pre-wired in NEMA 4 enclosure (110 V).
- Compressed air manifold mounted with pipe couplings on both ends for easy connection of air supply.
- Standard designed for 100 mph winds, and Zone 3 seismic loads.
- Cage and bag removal from large bin access door.
- Standard operating temperature to 275 degrees F.
- One full set of filter bags and wire cages.
- Zinc oxide primer on the interior and exterior, and an exterior finish of industrial enamel (color is tan or graphite).
- One differential pressure gauge with dust trap and connecting hardware.

*SPJ-BV Series is designed for storage tanks, silos, work bins, and material receivers.

We can also assist with meeting NFPA and OSHA Standards.



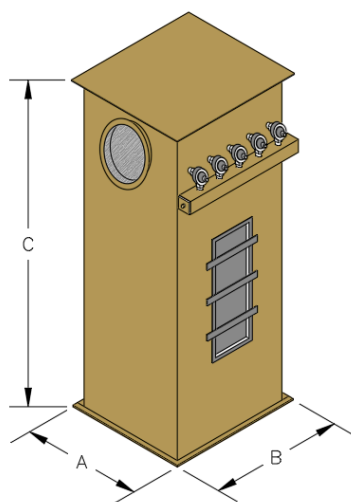
SCIENTIFIC
DUST COLLECTORS

4101 W. 126th Street + Alsip, IL 60803 USA
ph 708-597-7090 + fx 708-597-0313

www.scientificdustcollectors.com
A Venturedyne Ltd. Company

SPJ-BV Series

MODEL	"A"	"B"	"C"	OUTLET SIZE DIA	QTY. VALVES	CLEANING AIR SCFM REQD.	TOTAL WEIGHT (LBS)
SPJ-4-X4B6BV	17"	17"	98"	8"	2	0.2 - 3.3	450
SPJ-9-X4B6BV	25"	25"	98"	10"	3	0.4 - 4.9	650
SPJ-12-X4B6BV	25"	32"	98"	12"	3	0.5 - 6.5	800
SPJ-18-X4B6BV	25"	47"	98"	14"	3	0.7 - 9.8	950
SPJ-24-X4B6BV	32"	47"	98"	16"	4	1.0 - 9.8	1,100
SPJ-30-X4B6BV	40"	47"	103"	18"	5	1.2 - 9.8	1,250
SPJ-36-X4B6BV	48"	47"	108"	20"	6	1.5 - 9.8	1,500
LARGER MODELS AVAILABLE							
SPJ-4-X4B8BV	17"	17"	122"	8"	2	0.2 - 3.3	500
SPJ-9-X4B8BV	25"	25"	122"	10"	3	0.4 - 4.9	750
SPJ-12-X4B8BV	25"	32"	122"	12"	3	0.5 - 6.5	900
SPJ-18-X4B8BV	25"	47"	122"	14"	3	0.7 - 9.8	1,100
SPJ-24-X4B8BV	32"	47"	122"	16"	4	1.0 - 9.8	1,300
SPJ-30-X4B8BV	40"	47"	127"	18"	5	1.2 - 9.8	1,500
SPJ-36-X4B8BV	48"	47"	132"	20"	6	1.5 - 9.8	1,700
LOW PROFILE BINVENT	Maximum height of 36". Available in different sizes.						



LEGEND:

Example: SPJ-24-X4B6BV

- SPJ – Model
- 24 – Number of Bags
- BV – Bin Vent
- 6 – Length of Bags (ft)

ALL DIMENSIONS AND WEIGHTS ARE APPROXIMATE, AND ARE TO BE USED FOR REFERENCE ONLY.



SCIENTIFIC
DUST COLLECTORS

4101 W. 126th Street + Alsip, IL 60803 USA
ph 708-597-7090 + fx 708-597-0313

www.scientificdustcollectors.com
A Venturedyne Ltd. Company